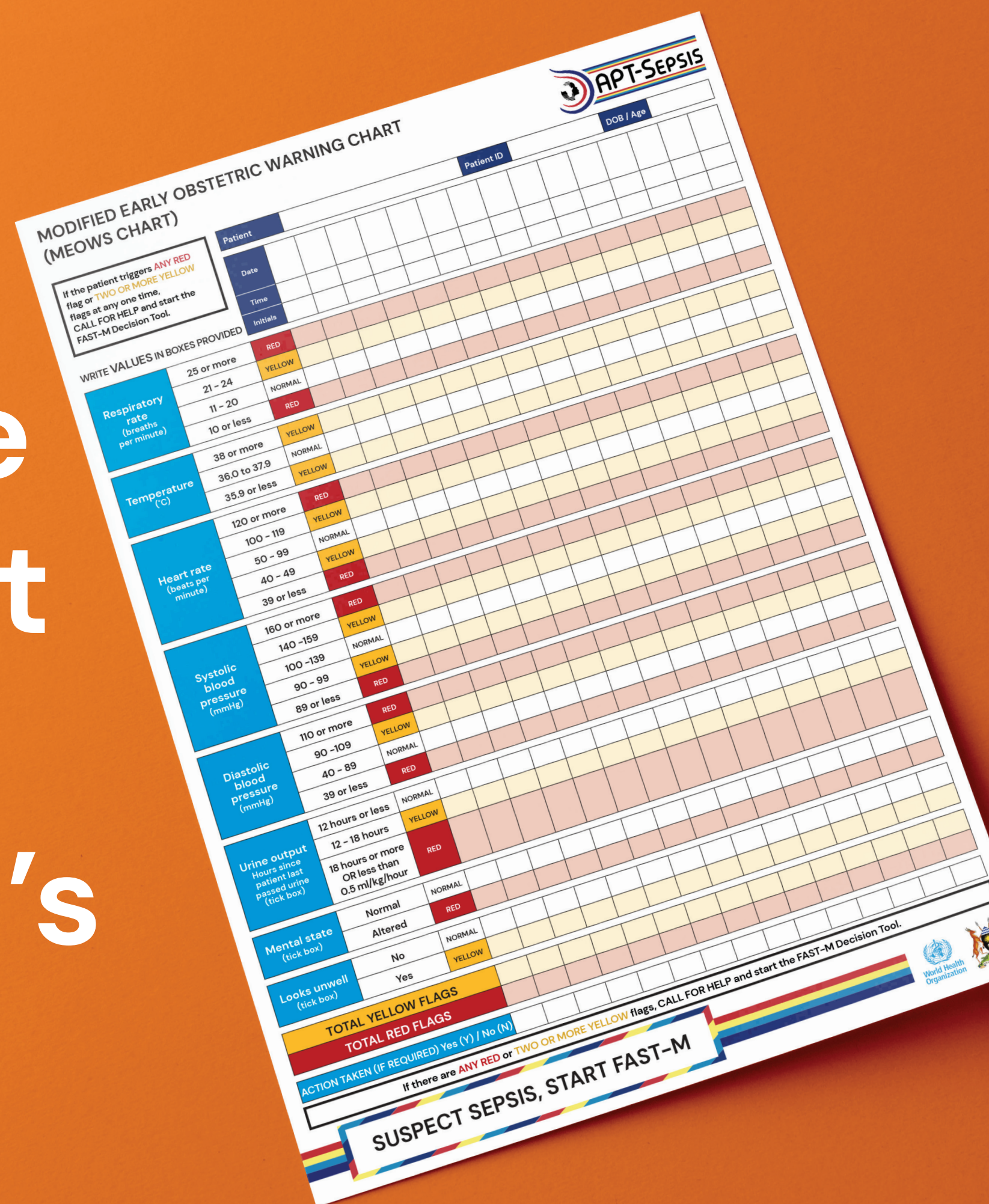


Complete the MEOWS Chart to monitor every woman's vital signs



MODIFIED EARLY OBSTETRIC WARNING CHART (MEOWS CHART)

If the patient triggers **ANY RED** flag or **TWO OR MORE YELLOW** flags at any one time, CALL FOR HELP and start the FAST-M Decision Tool.

WRITE VALUES IN BOXES PROVIDED

Parameter	Normal Range	Flags
Respiratory rate (breaths per minute)	11 - 20	RED (≥ 25 or ≤ 10), YELLOW (21-24)
Temperature (°C)	36.0 to 37.9	RED (≥ 38.0 or ≤ 35.9), YELLOW (38.0 to 37.9)
Heart rate (beats per minute)	50 - 99	RED (≥ 120 or ≤ 39), YELLOW (100-119, 40-49)
Systolic blood pressure (mmHg)	90 - 99	RED (≥ 160 or ≤ 89), YELLOW (140-159, 90-99)
Diastolic blood pressure (mmHg)	40 - 89	RED (≥ 110 or ≤ 39), YELLOW (90-109, 40-89)
Urine output (litres since patient last passed urine (tick box))	12 - 18 hours	RED (≥ 18 hours or ≤ 0.5 ml/kg/hour), YELLOW (12-18 hours)
Mental state (tick box)	Normal	RED (Altered), YELLOW (No)
Looks unwell (tick box)	No	RED (Yes), YELLOW (No)

TOTAL YELLOW FLAGS _____

TOTAL RED FLAGS _____

ACTION TAKEN (IF REQUIRED) Yes (Y) / No (N) _____

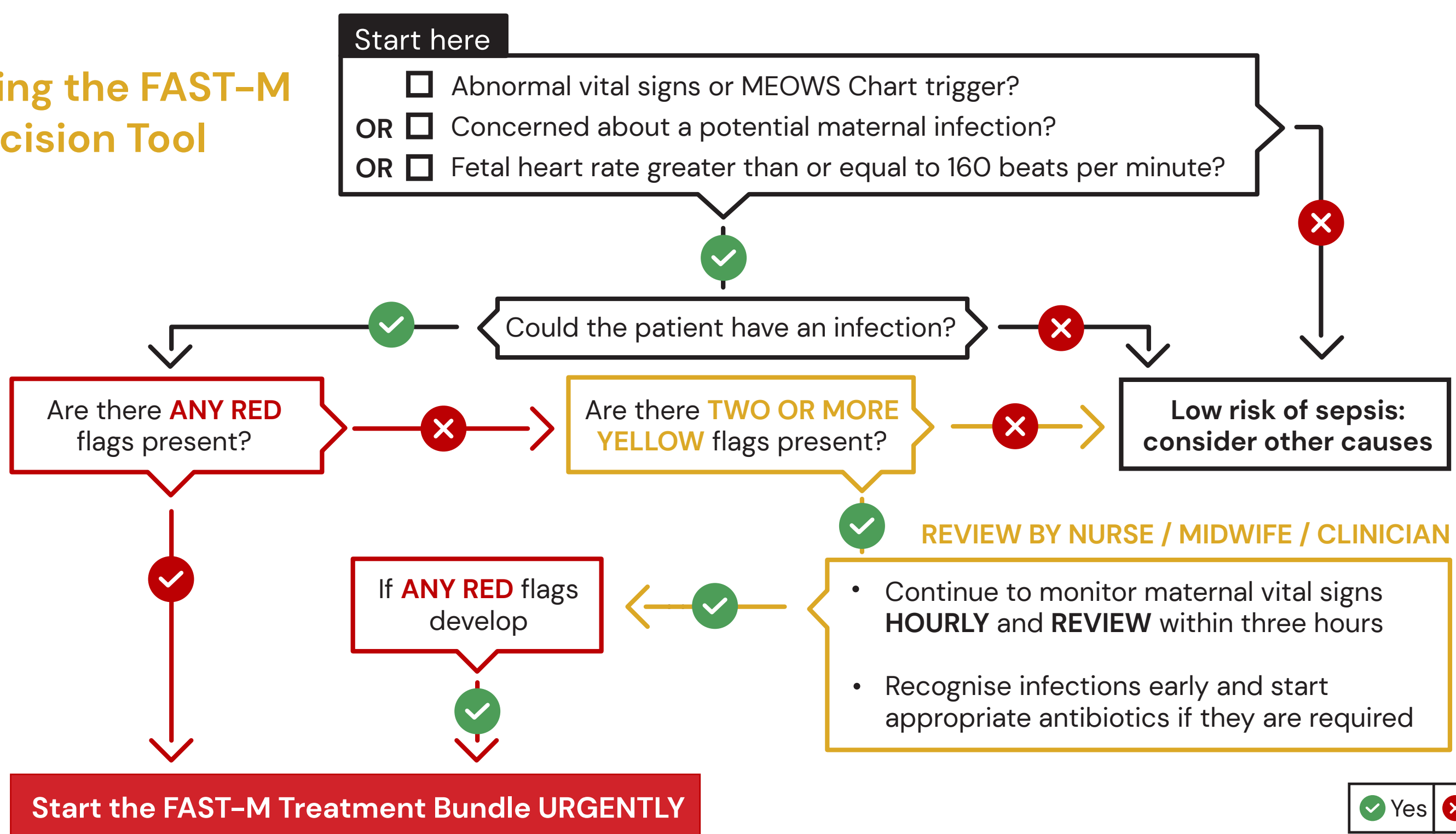
If there are **ANY RED** or **TWO OR MORE YELLOW** flags, CALL FOR HELP and start the FAST-M Decision Tool.

SUSPECT SEPSIS, START FAST-M

ABNORMAL VITAL SIGNS NEED URGENT ACTION

If the vital signs on the MEOWS Chart trigger **ANY RED** or **TWO OR MORE YELLOW** flags, start the **FAST-M Decision Tool**.

Using the FAST-M Decision Tool



Suspect sepsis, start FAST-M